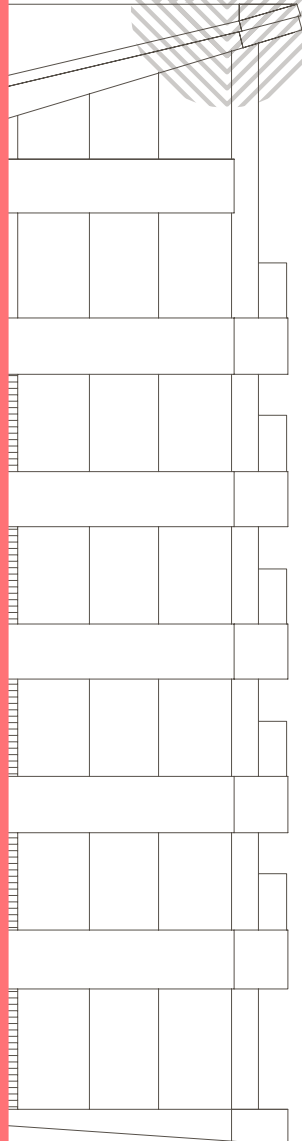


This marketing brochure is intended as a general guide and does not represent an offer for sale and is for information purposes only. The images are artist's impressions only. All information provided herein reflects the proposed development at the time of publishing but cannot be relied upon to be accurate or final and is subjected to change at the discretion of the developer. No guarantee, representation or warranty is offered by the developer as to the availability or accuracy of the proposed facilities, services or amenities referred to in this document and developer reserves the right to make changes and alter specifications without notice. All prospective buyers should rely on the relevant contract documentation and their own independent enquiries before entering into any financial commitment with regard to this development.

FLOORPLANS



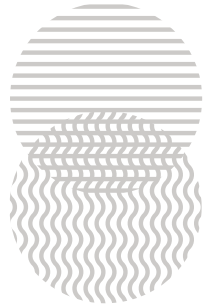
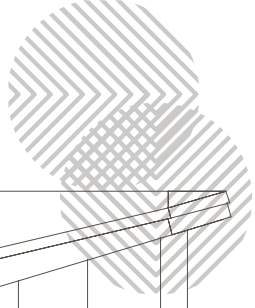
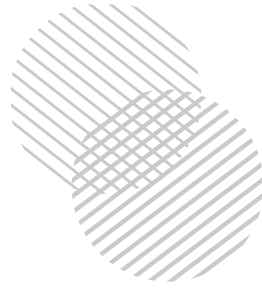
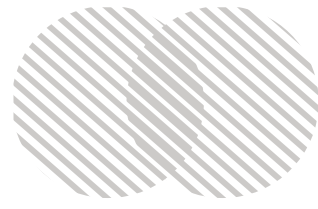
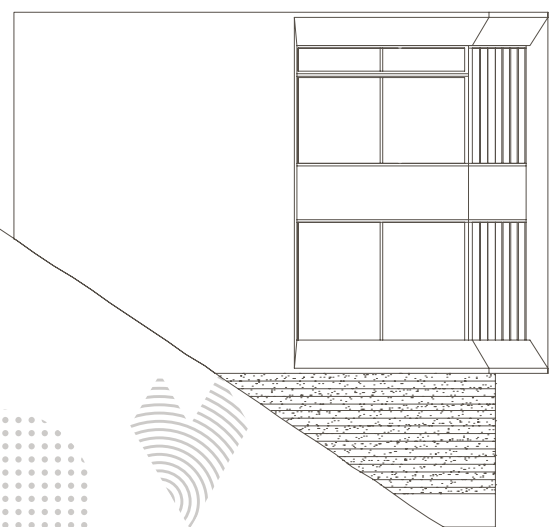
L06
2B-1[^]
2B-7
3B-4
3B-5
PH-7

L05
2B-1
2B-1*
3B-1
3B-2
3B-2*
3B-3

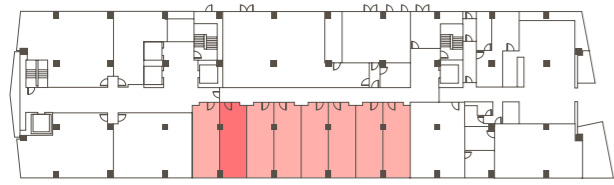
L04
ST-3
2B-1
2B-1*
3B-1
3B-2
3B-2*
3B-3

L03
L02
ST-3
2B-1
2B-1*
2B-2
2B-3
3B-1
3B-2
3B-3

L01
ST-1
ST-1(WC)
ST-2
2B-4
2B-5
2B-6

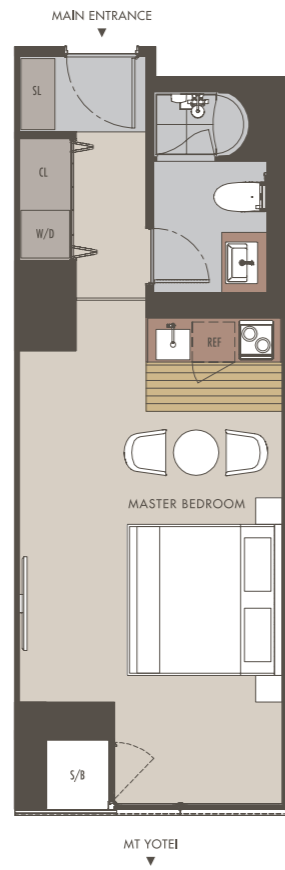


LEVEL 1 FLOORPLAN



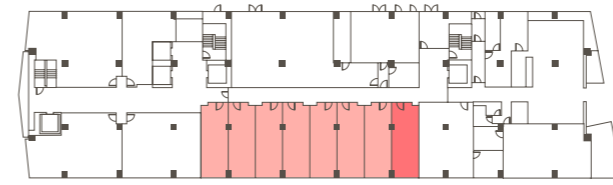
ST-1

TOTAL FLOOR AREA: 34.02m²
AVAILABLE UNITS: 7



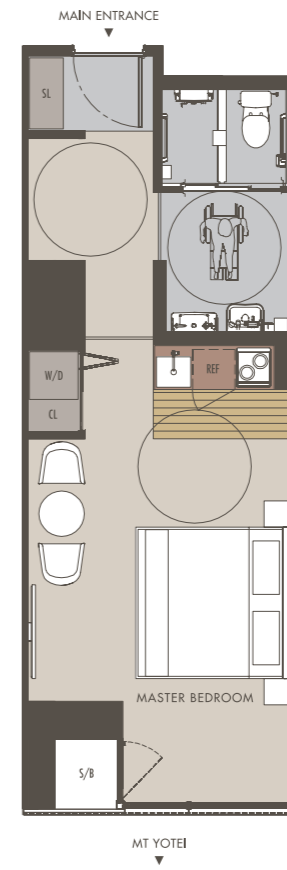
NORTH

LEVEL 1 FLOORPLAN



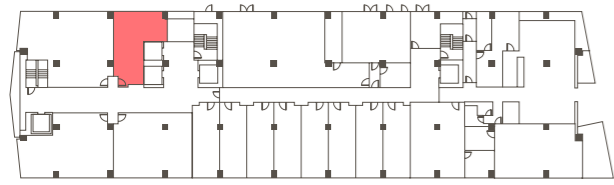
ST-1(WC)

TOTAL FLOOR AREA: 34.01m²
AVAILABLE UNIT: 1

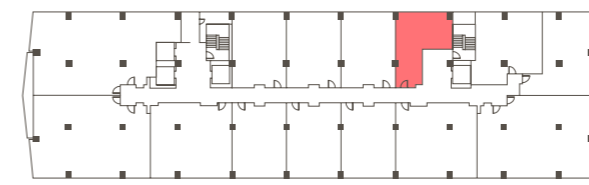


NORTH

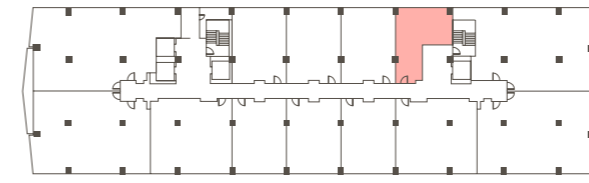
LEVEL 1 FLOORPLAN



LEVEL 2 & 3 FLOORPLAN

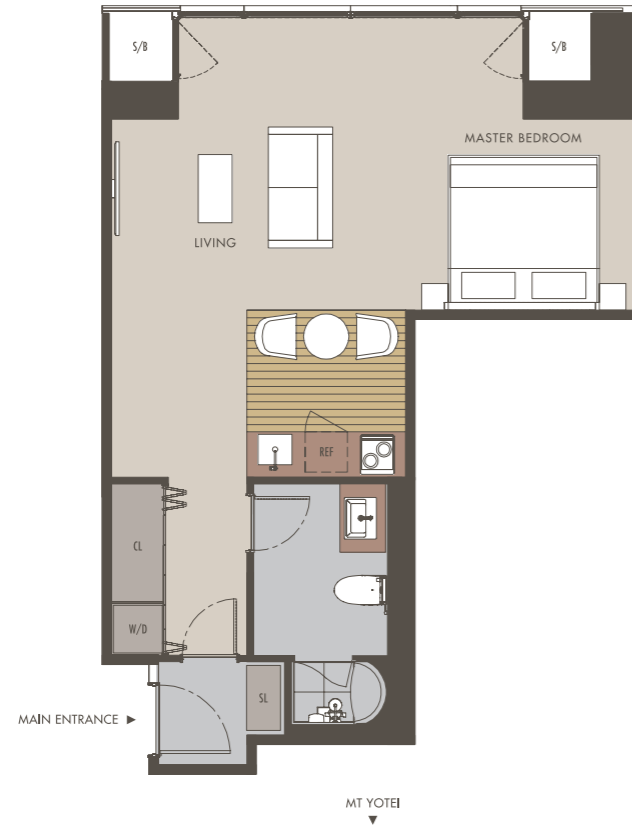


LEVEL 4 FLOORPLAN



ST-2

TOTAL FLOOR AREA: 49.83m²
AVAILABLE UNIT: 1



NORTH

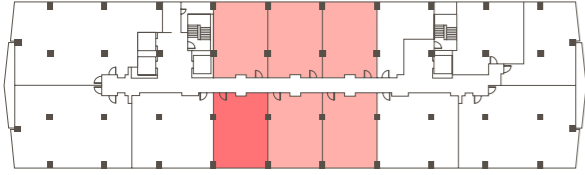
ST-3

TOTAL FLOOR AREA: 52.11m²
AVAILABLE UNITS: 3

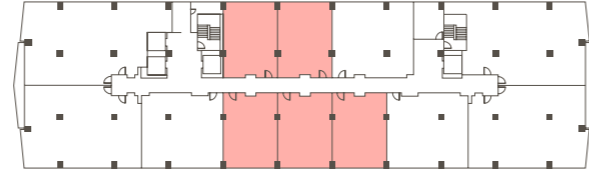


NORTH

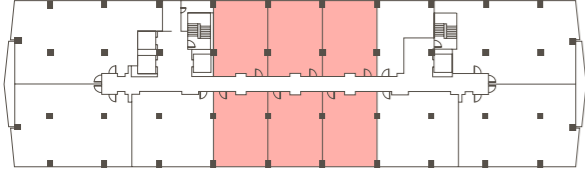
LEVEL 2 & 3 FLOORPLAN



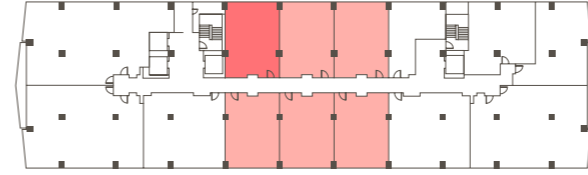
LEVEL 5 FLOORPLAN



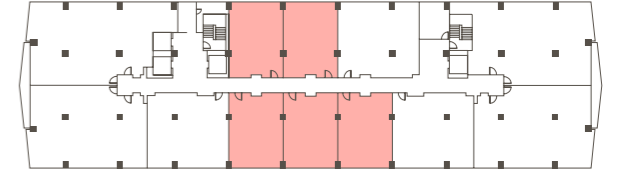
LEVEL 4 FLOORPLAN



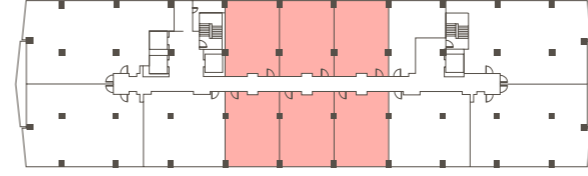
LEVEL 2 & 3 FLOORPLAN



LEVEL 5 FLOORPLAN

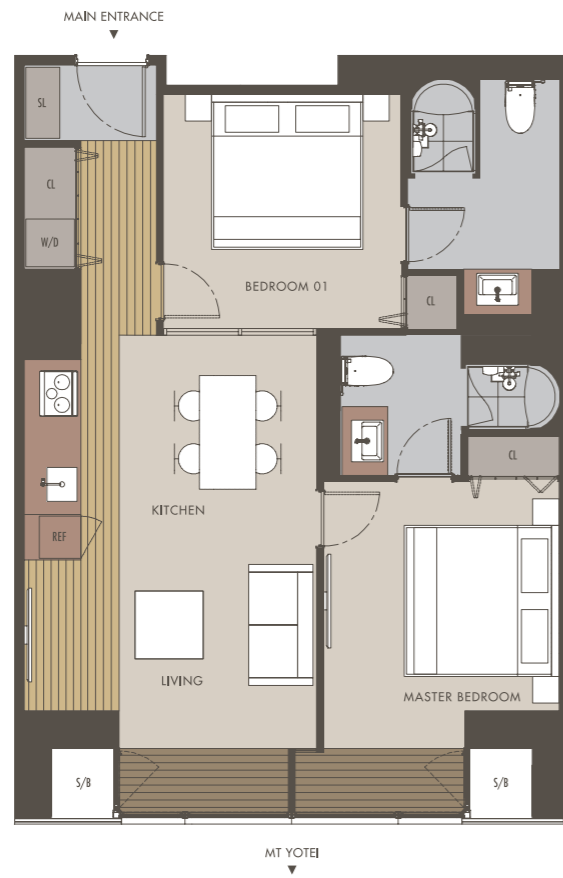


LEVEL 4 FLOORPLAN



2B-1

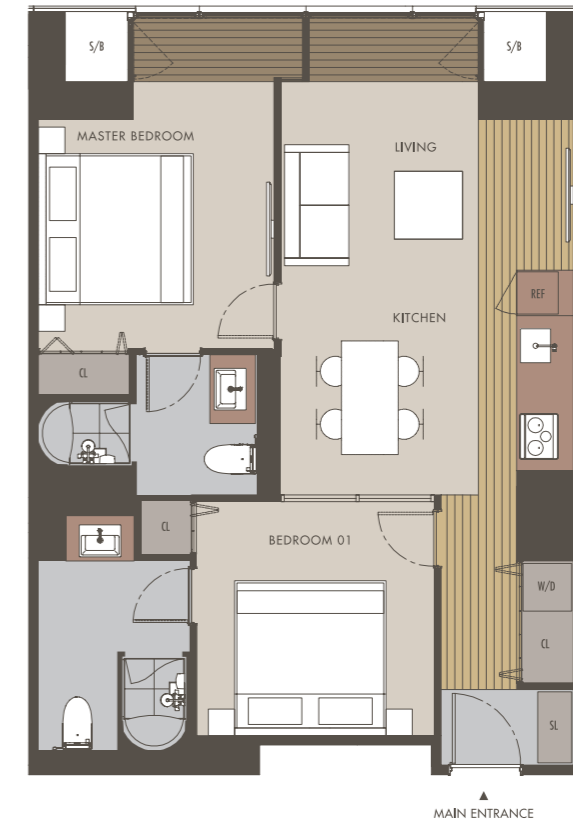
TOTAL FLOOR AREA: 68.50m²
AVAILABLE UNITS: 21



NORTH

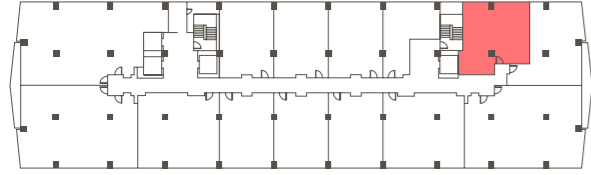
2B-1*

TOTAL FLOOR AREA: 72.08m²
AVAILABLE UNITS: 4



NORTH

LEVEL 2 & 3 FLOORPLAN



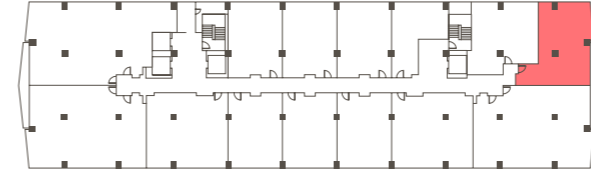
2B-2

TOTAL FLOOR AREA: 76.76m²
AVAILABLE UNITS: 2



NORTH

LEVEL 2 & 3 FLOORPLAN



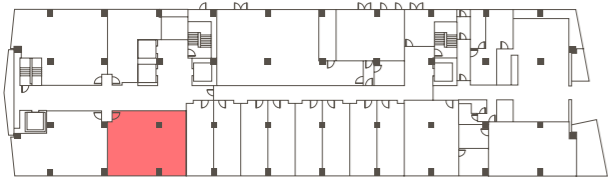
2B-3

TOTAL FLOOR AREA: 83.41m²
AVAILABLE UNITS: 2



NORTH

LEVEL 1 FLOORPLAN



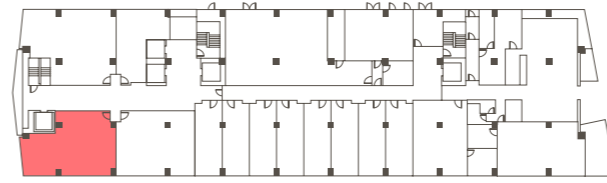
2B-4

TOTAL FLOOR AREA: 85.36m²
AVAILABLE UNIT: 1



NORTH

LEVEL 1 FLOORPLAN



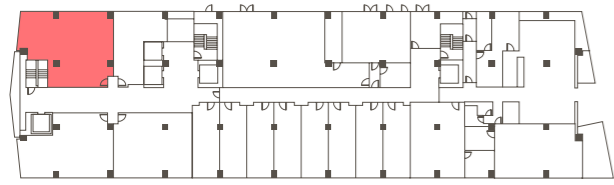
2B-5

TOTAL FLOOR AREA: 92.54m²
AVAILABLE UNIT: 1

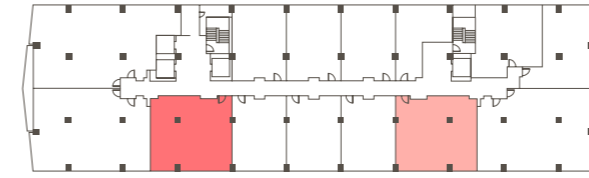


NORTH

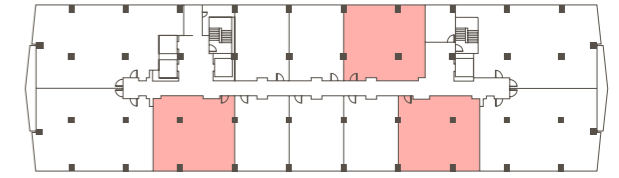
LEVEL 1 FLOORPLAN



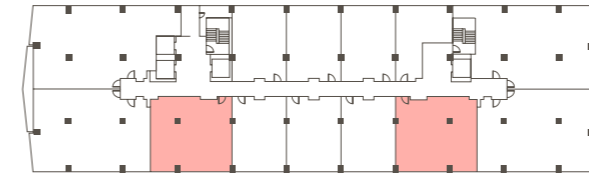
LEVEL 2 & 3 FLOORPLAN



LEVEL 5 FLOORPLAN



LEVEL 4 FLOORPLAN



2B-6

TOTAL FLOOR AREA: 106.86m²
AVAILABLE UNIT: 1



NORTH

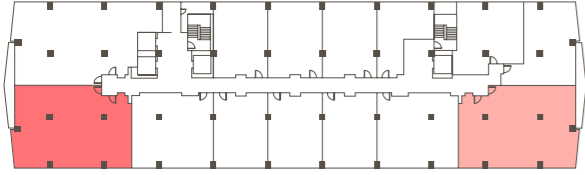
3B-1

TOTAL FLOOR AREA: 102.34m²
AVAILABLE UNITS: 9

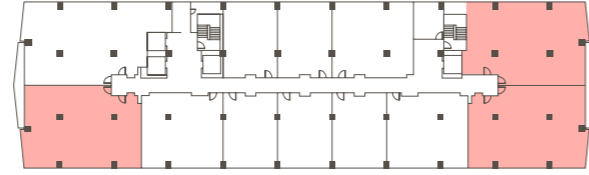


NORTH

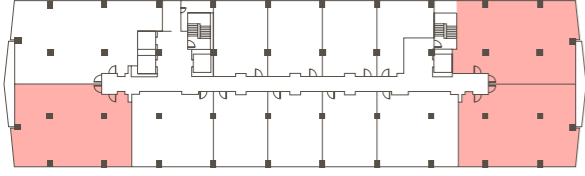
LEVEL 2 & 3 FLOORPLAN



LEVEL 5 FLOORPLAN



LEVEL 4 FLOORPLAN



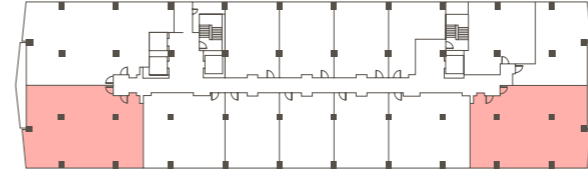
3B-2

TOTAL FLOOR AREA: 161.68m²
AVAILABLE UNITS: 8

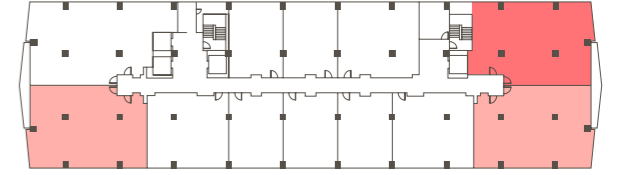


NORTH

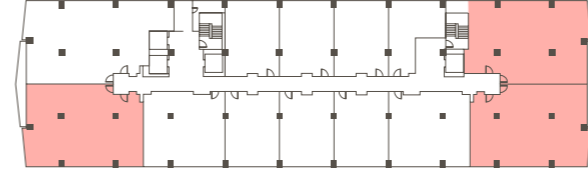
LEVEL 2 & 3 FLOORPLAN



LEVEL 5 FLOORPLAN

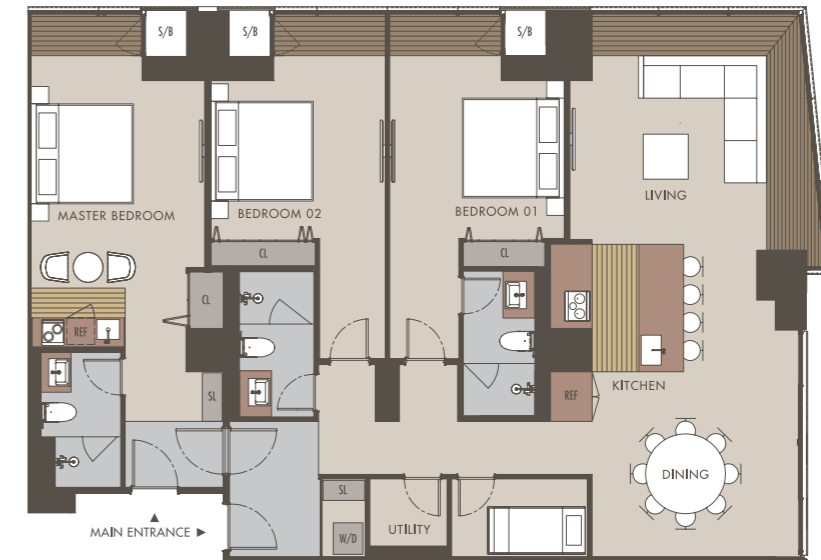


LEVEL 4 FLOORPLAN



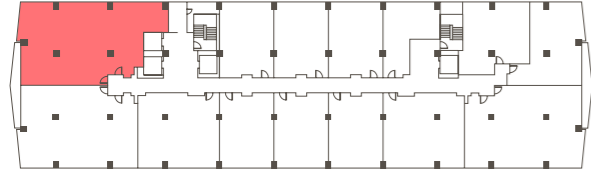
3B-2*

TOTAL FLOOR AREA: 170.25m²
AVAILABLE UNITS: 2

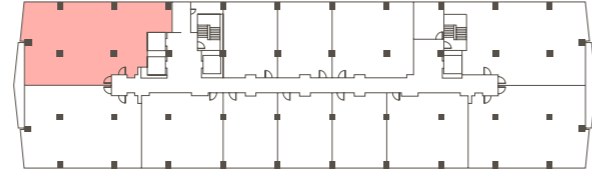


NORTH

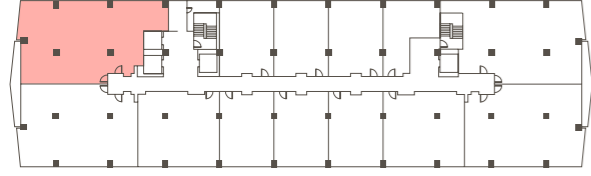
LEVEL 2 & 3 FLOORPLAN



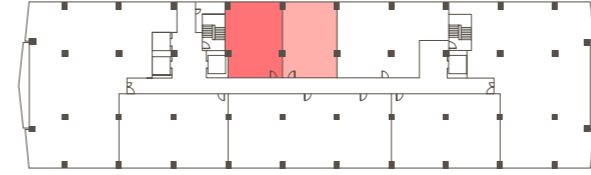
LEVEL 5 FLOORPLAN



LEVEL 4 FLOORPLAN



LEVEL 6 FLOORPLAN



3B-3

TOTAL FLOOR AREA: 181.03m²
AVAILABLE UNITS: 4



NORTH

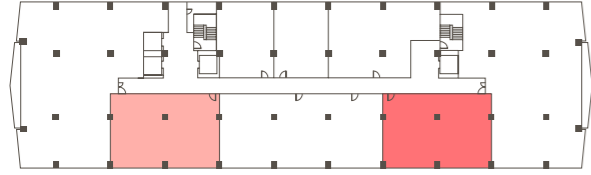
2B-1 ^

TOTAL FLOOR AREA: 74.91m²
AVAILABLE UNITS: 2



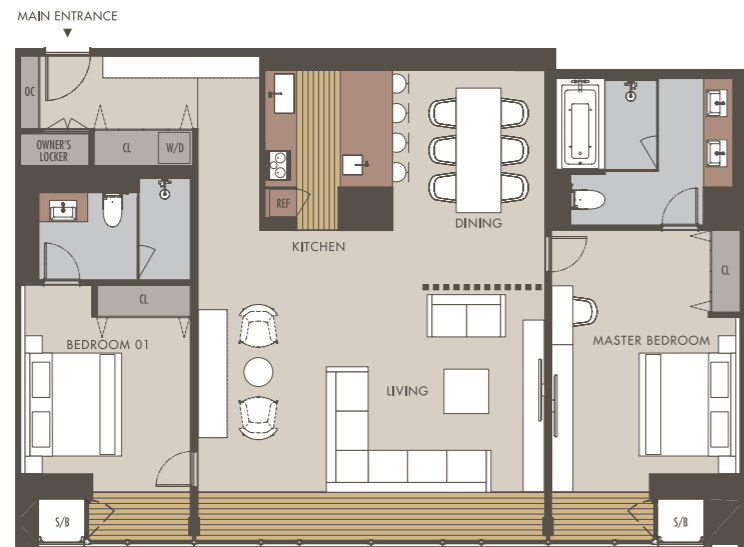
NORTH

LEVEL 6 FLOORPLAN



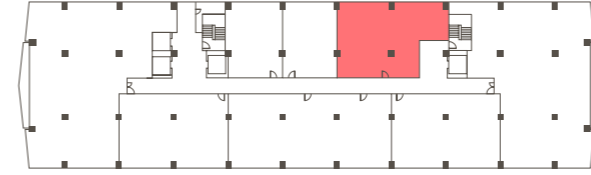
2B-7

TOTAL FLOOR AREA: 145.96m²
AVAILABLE UNITS: 2



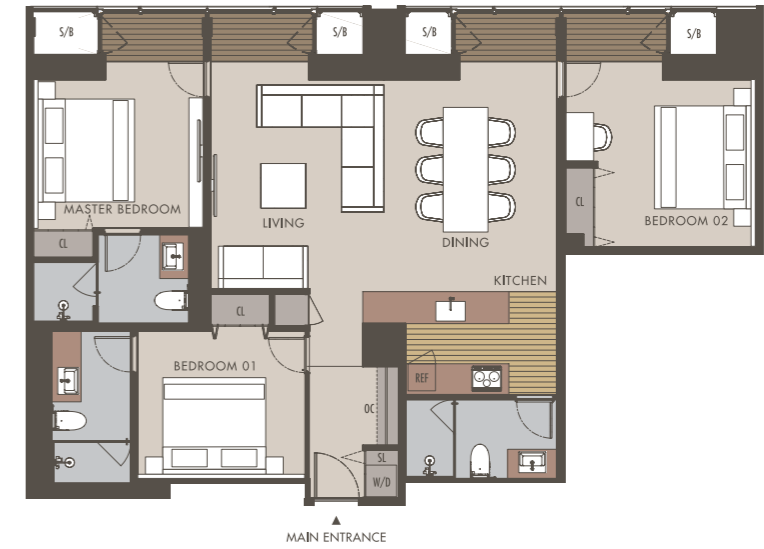
NORTH

LEVEL 6 FLOORPLAN



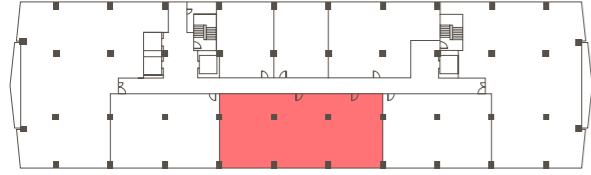
3B-4

TOTAL FLOOR AREA: 125.21m²
AVAILABLE UNITS: 1



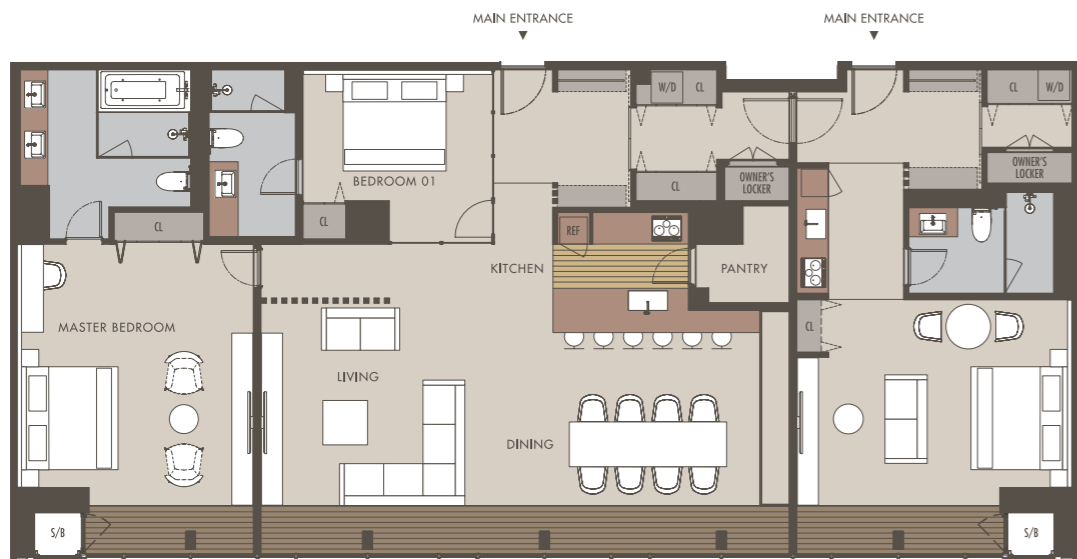
NORTH

LEVEL 6 FLOORPLAN



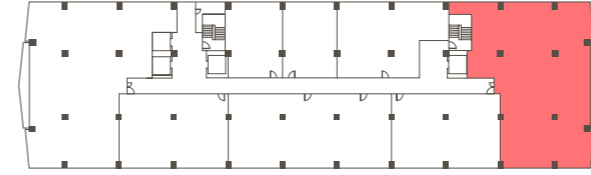
3B-5

TOTAL FLOOR AREA: 214.61m²
AVAILABLE UNITS: 1



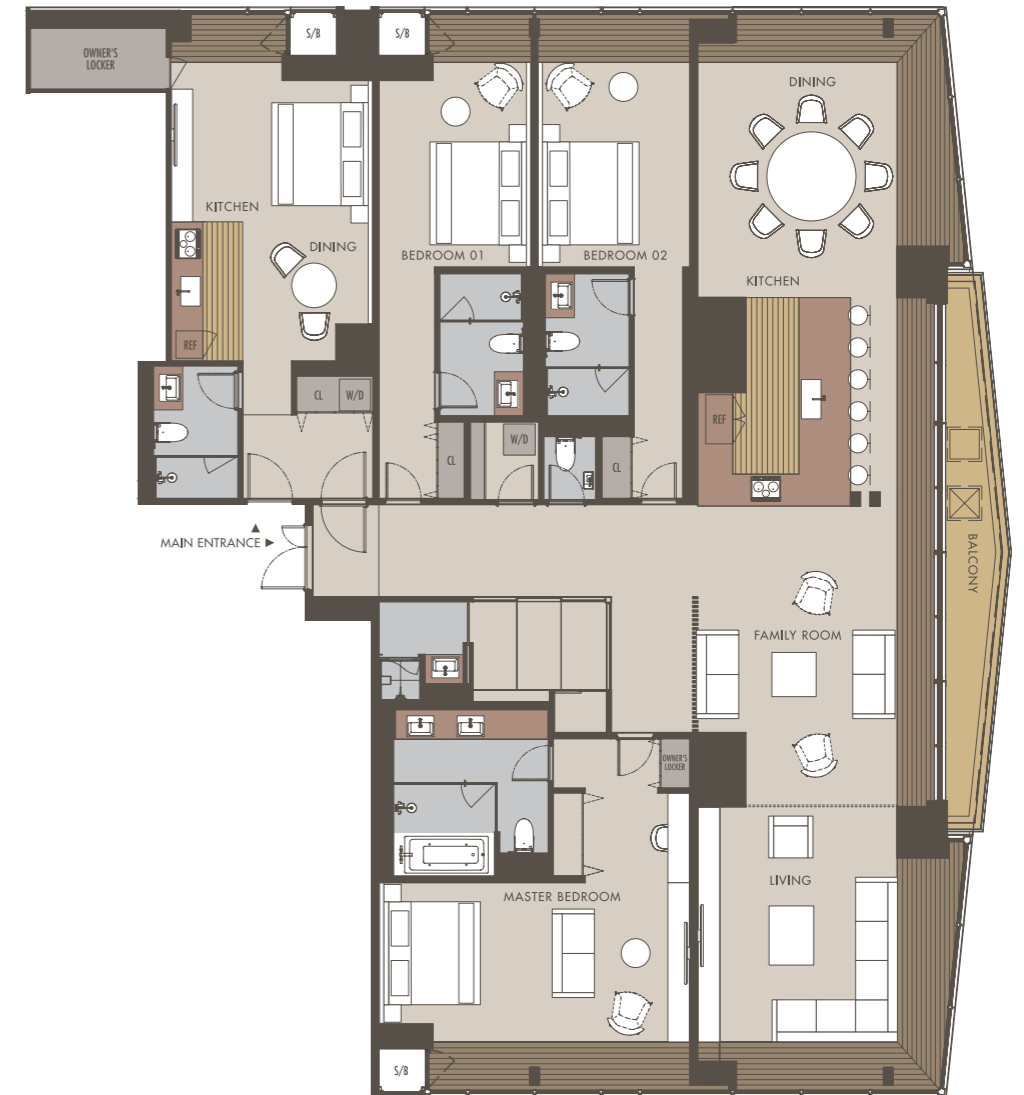
NORTH

LEVEL 6 FLOORPLAN

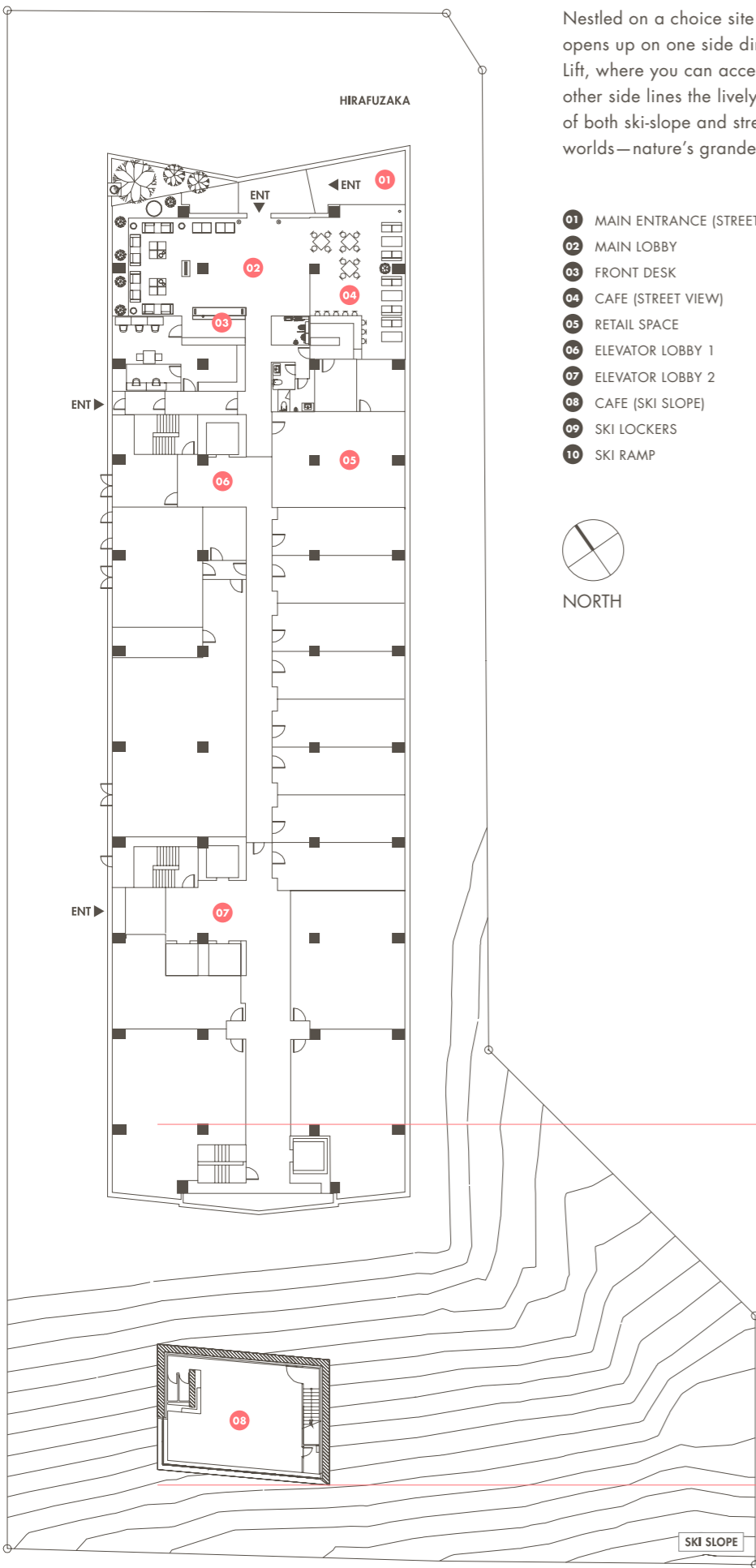


PH-7

TOTAL FLOOR AREA: 307.63m²
AVAILABLE UNITS: 1



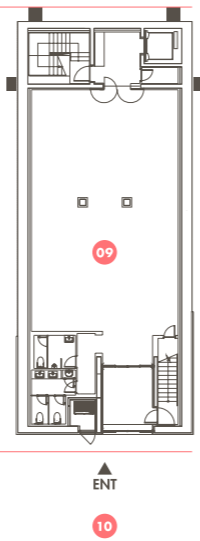
NORTH



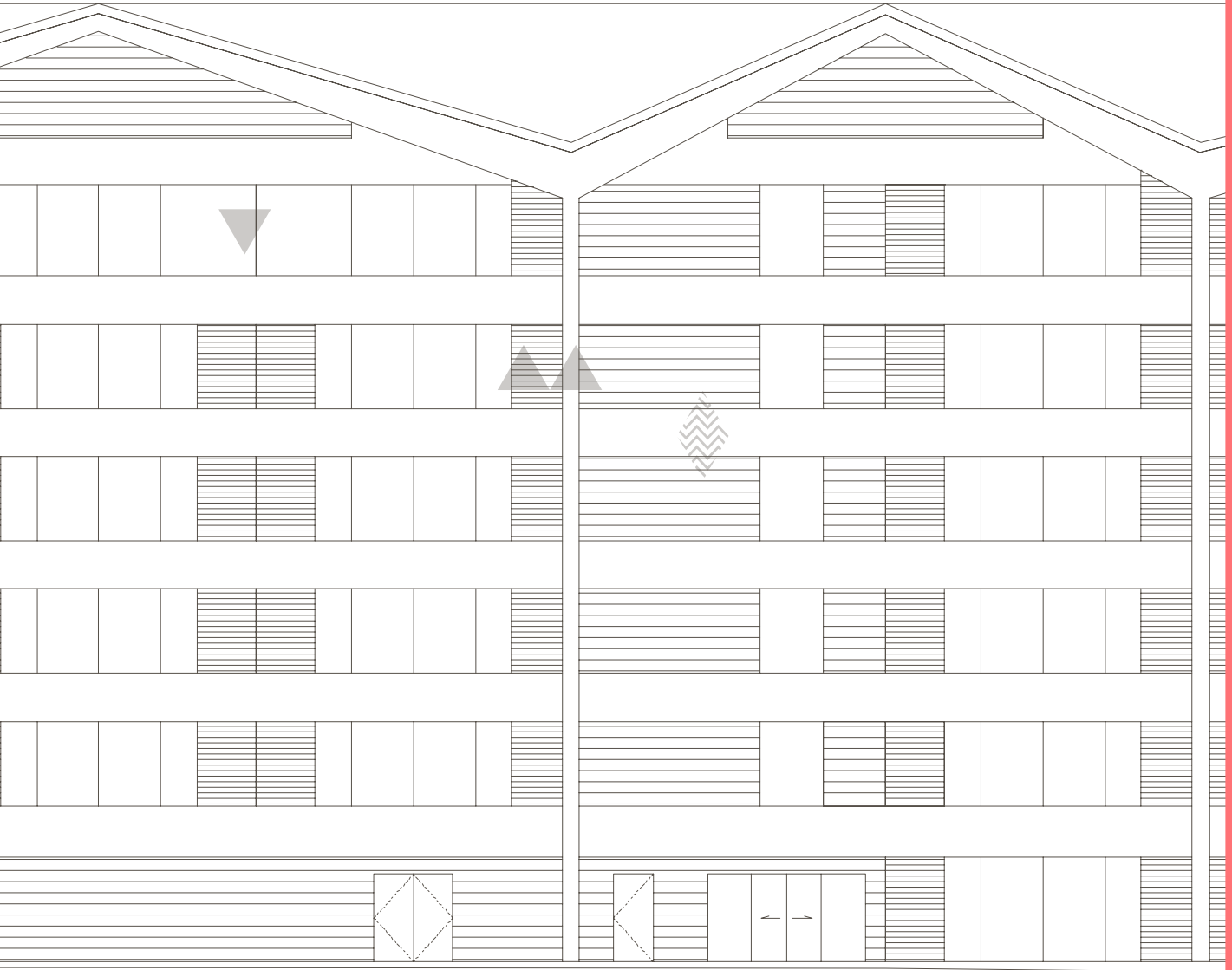
LEVEL 1

Nestled on a choice site in the popular Hirafu town, the residence opens up on one side directly to the powder ski slopes of Ace Family Lift, where you can access the entire ski fields of Annupuri. On the other side lines the lively main street of Hirafuzaka. Having the luxury of both ski-slope and street-side access combines the best of both worlds—nature’s grandeur and urban comforts.

- 01 MAIN ENTRANCE (STREET SIDE)
- 02 MAIN LOBBY
- 03 FRONT DESK
- 04 CAFE (STREET VIEW)
- 05 RETAIL SPACE
- 06 ELEVATOR LOBBY 1
- 07 ELEVATOR LOBBY 2
- 08 CAFE (SKI SLOPE)
- 09 SKI LOCKERS
- 10 SKI RAMP



BASEMENT 1



LEGEND

- | | |
|--|--|
|  NON USABLE SPACE |  WASHER DRYER |
|  BAY WINDOW |  WALK IN CLOSET |
|  SERVICE BALCONY |  CLOSET |
|  REFRIGERATOR |  SHOE LOCKER |